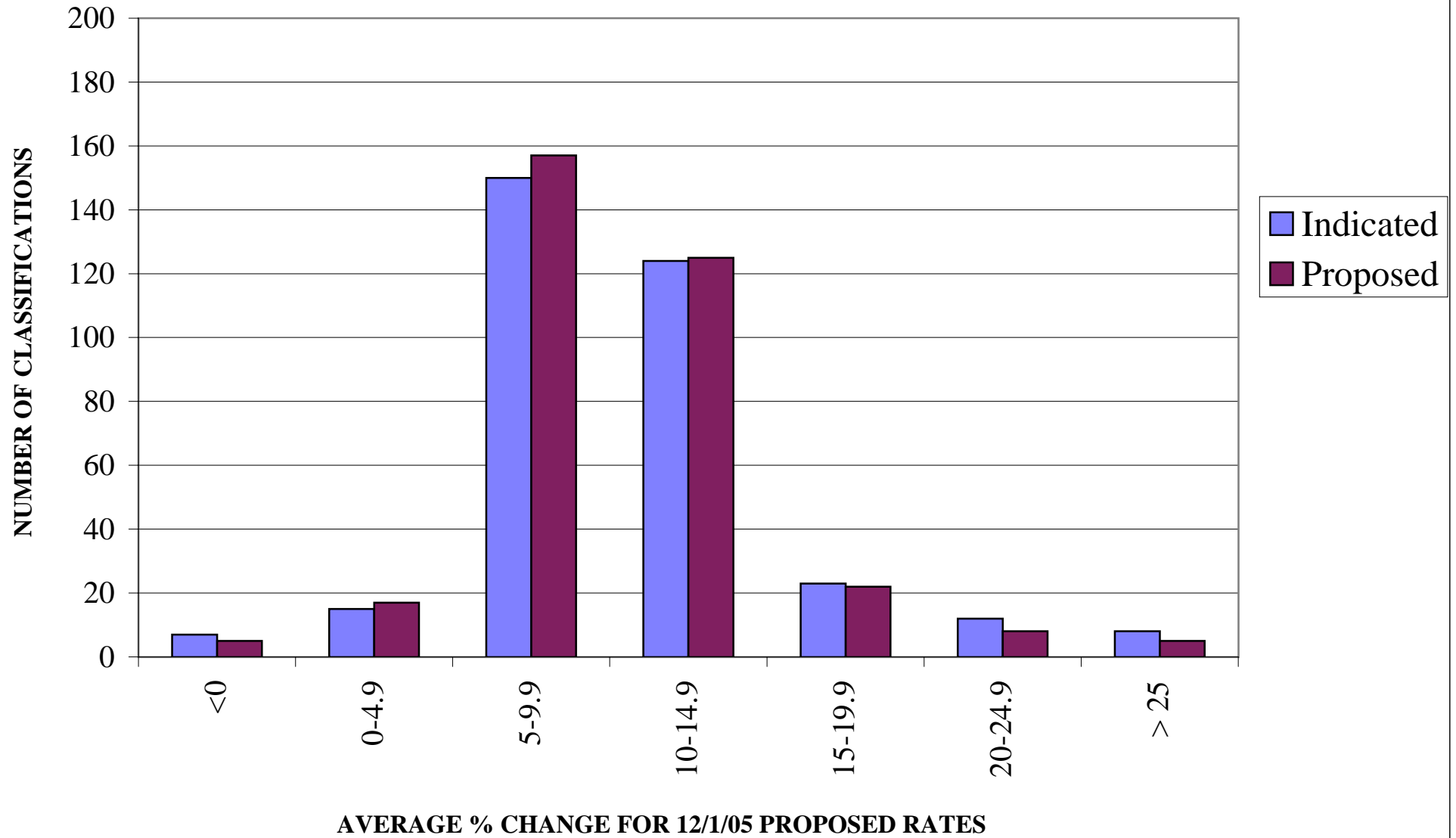


DELAWARE COMPENSATION RATING BUREAU, INC.

Distribution of Residual Market Rate Changes

# DISTRIBUTION OF DELAWARE RESIDUAL MARKET RATE CHANGES



## CLASSES CAPPED AT UPPER BOUND

| CLASS | PRE-CAPPED<br>% CHANGE | POST-CAPPED<br>% CHANGE |
|-------|------------------------|-------------------------|
| 913   | 40.10                  | 36.00                   |
| 921 + | 48.40                  | 17.00                   |

- + This class had an interim calls change at June 1, 2005.  
The percentage change from both December 1, 2004 and  
June 1, 2005 were considered.